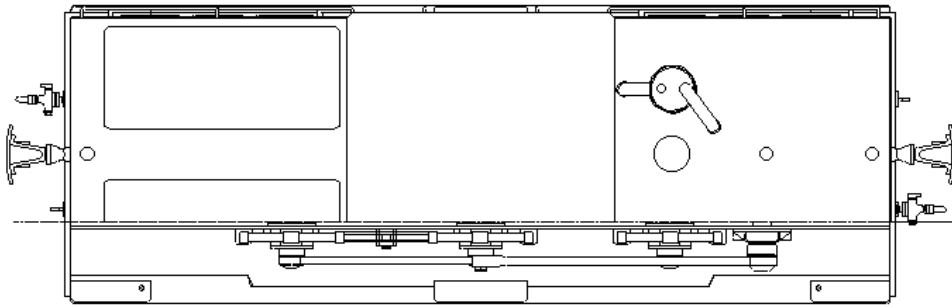


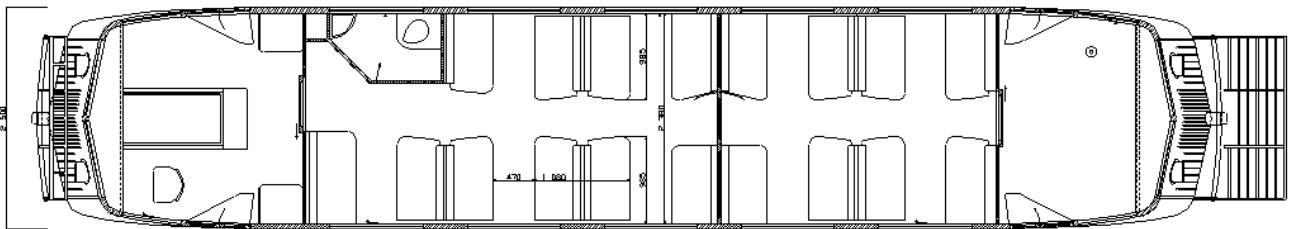
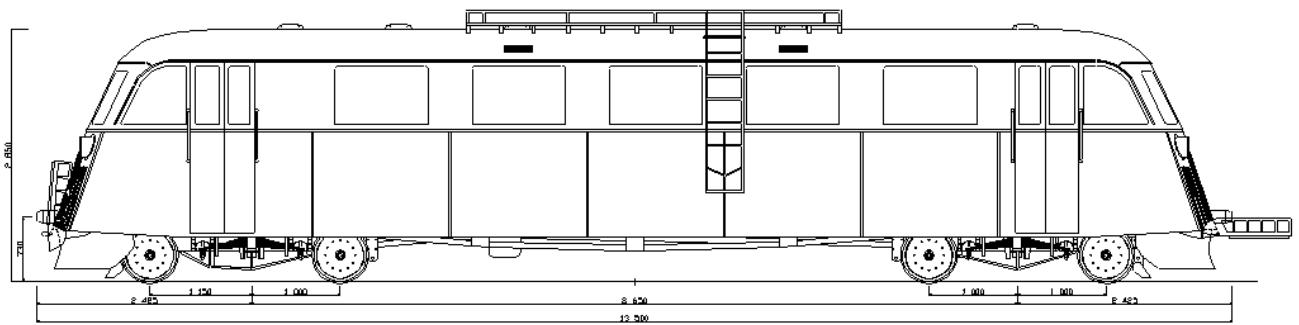
©1907 Anders Östlund



MOTORLOK  
Delary-Strömsnäsbruk

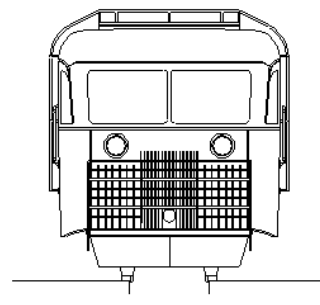
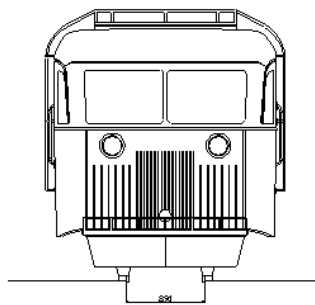
*Tillverkare*

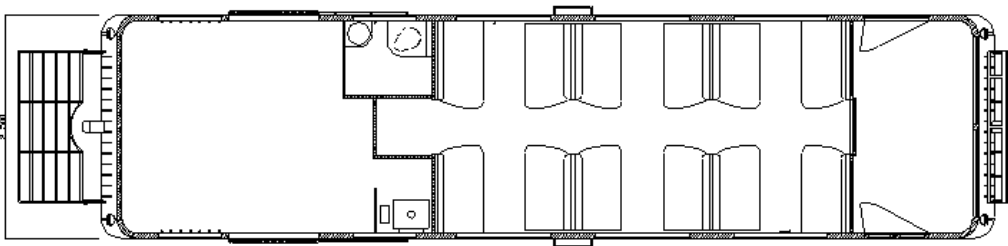
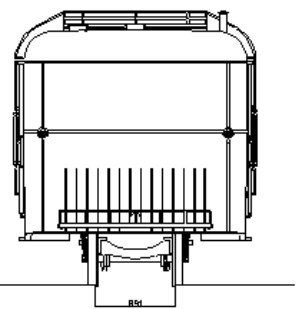
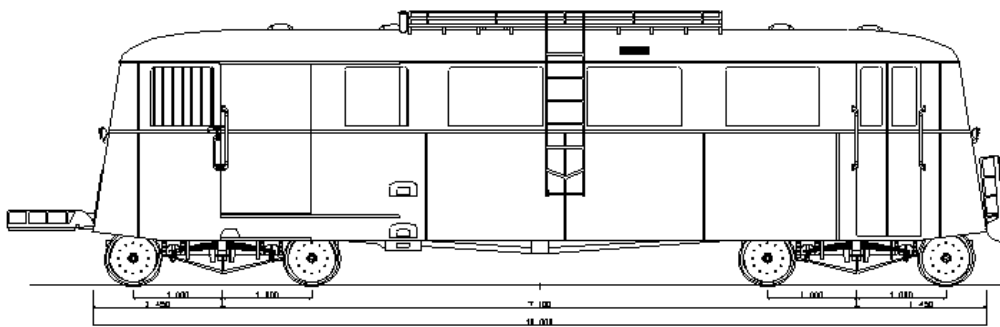
*John Bergman & Son, Motåka*



### SJ Littera Y01p

Ritningen baserad på HC förslagsritning  
Visar tidigt SJ utförande





SJ Littera UCFo2p  
Nr 1553

Ritningen baserad på  
SJ Mbr 20876

