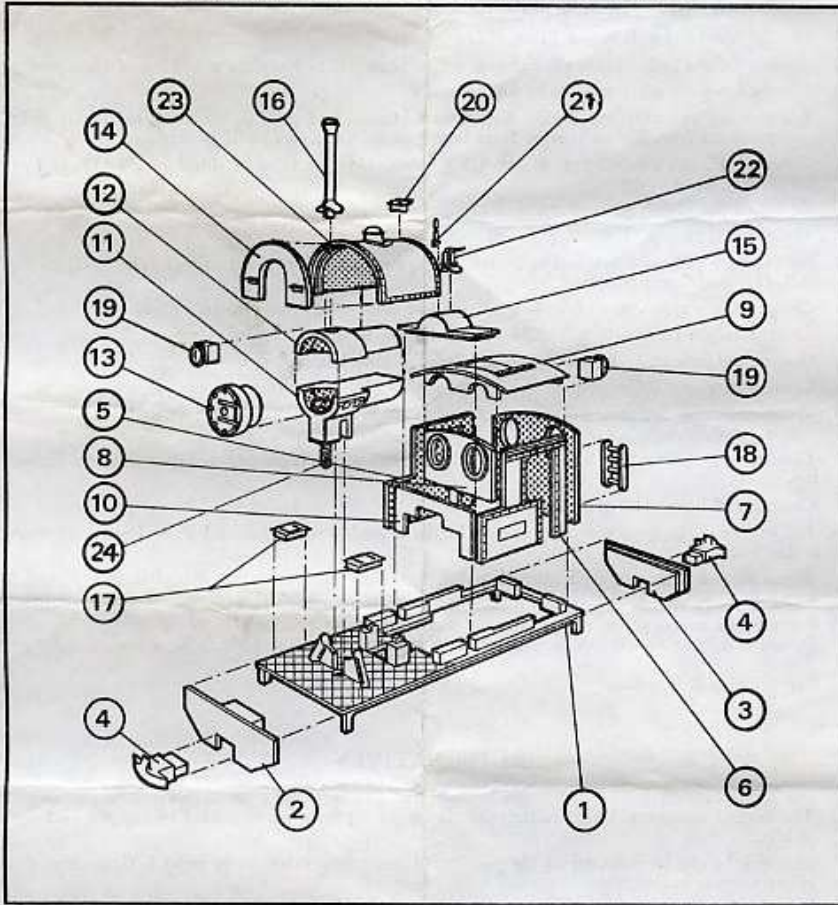


PECO JAMES 00-9 GAUGE LOCO BODY KIT

FOR USE WITH ARNOLD 0-6-0 MK. II CHASSIS

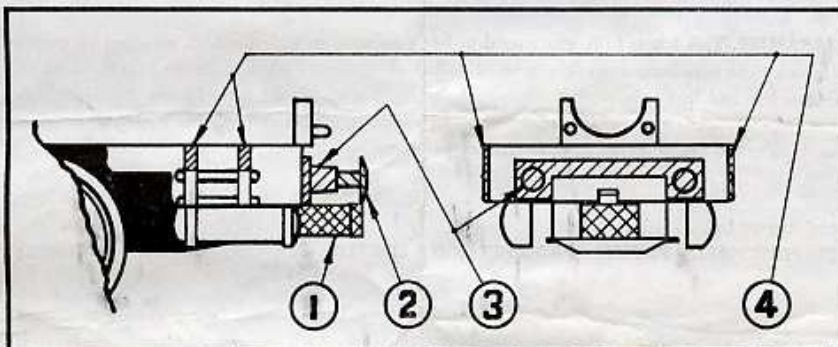


IMPORTANT: It is in your interest to check the contents (listed below), read the general instructions, and follow them carefully when assembling.

LIST OF PARTS

- | | | |
|-----------------------|----------------------------|------------------------|
| 1. Footplate unit. | 9. Cab roof. | 17. Tool boxes (pair). |
| 2. Front buffer beam. | 10. Front of side bunkers. | 18. Ladder. |
| 3. Rear buffer beam. | 11. Lower-half boiler. | 19. Headlights (pair). |
| 4. Couplers (pair). | 12. Top-half boiler. | 20. Filler cap. |
| 5. R.H. cab side. | 13. Smokebox front. | 21. Whistle. |
| 6. L.H. cab side. | 14. Front of saddle. | 22. Safety valve. |
| 7. Rear of cab. | 15. Firebox top. | 23. Saddle. |
| 8. Front of cab. | 16. Chimney. | 24. Screw. |

MODIFICATIONS TO ARNOLD CHASSIS



- (1) Remove couplings.
- (2) Remove buffers.
- (3) - (4) Cut off shaded areas with sharp craft knife or razor blade.

INSTRUCTIONS

- A Remove any excess flash from castings.
- B Modify Arnold chassis as per illustration over.
- C Cement * front buffer beam (2) and rear buffer beam (3) to footplate unit (1) and leave to dry.
- D Cement couplers (4) into slots in buffer beams.
- E When above assembly has dried, offer Arnold chassis into position to check for fit; if tight, remove metal from lug on rear of front buffer beam, until perfect fit is obtained.
- F Cement L.H. cab side (6) rear of cab (7) R.H. cab side (5) front of side bunkers (10) to footplate unit; leave to dry.
- G Cement front of cab (8) and cab roof (9) into position.
- H Cement firebox top (15) into position.
- I Insert screw (24) in lower-half of boiler. See drawing. Cement lower-half of boiler (11) to top half (12) and leave to dry.
- J Cement above assembly to footplate unit and fit smokebox front (13) into position.
- K Cement saddle front (14) to saddle (23) and leave to dry.
- L Cement saddle unit to top of boiler and front of side bunkers.
- M Cement filler cap (20) to top of saddle; fix ladder (18) to back of cab.
- N Headlights (19) optional. Fit on top of smokebox in front of chimney and under cab roof at rear or as desired.
- O Cement safety valve (22) into position. Whistle (21) which is side mounted or fixed on firebox top.
- P Cement tool boxes (17) into position.
- Q Fill in any slight gaps that may appear in the assembly with Humbrol Body Putty and leave to harden.
- R When putty has thoroughly hardened, polish the filled joints with fine grade emery.
- S Screw body to chassis before fixing chimney. This is necessary to keep the motor in position. For ease of maintenance we recommend that the chimney is lightly glued in position with Secotone only so that it can be removed to provide access to the body fixing screw.

* Araldite or Britfix 88.

ALTERNATIVES

1. The nameplate on bunker sides can be used for numbers, crest or Railway Company name. The engine name could alternatively be shown on separate plates added to the sides of the saddle.
2. The whistle can be mounted in the position of the safety valve, as in some N.G. engines the safety valve is in the cab.
3. For added realism, little pieces of coal can be fixed at the top of the side bunkers.
4. Both headlights can be mounted on the front of the footplate.
5. Smokebox front is inter-changeable with the one in the Jeanette kit, so that variations can be obtained by inter-mixing kits.
6. For extra effect, small circles of clear plastic sheet can be fixed in the spectacle plates.
7. A driver and fireman added one to each side of the cab adds realism and conveniently hides motor.
8. An 0-4-0 version giving still further variety can be made by simply removing the centre driving wheels.

PAINTING. For a superior finish it is recommended that the model be sprayed with "Humbrol" Spray Paint. The illustration on the box has been painted in Wrought Iron black and lettered with "Blick" Modellers' Print—but colour schemes are optional.

GUARANTEE. This Kit is fully guaranteed to be in accordance with the high standard of quality for which Peco have become world renowned. While every care is taken to ensure that the contents are complete and that only perfect components are packaged, should there be any discrepancy or cause for dissatisfaction you are requested to immediately advise and/or return the faulty components direct to the Manufacturers for free replacement.

Manufactured by
THE PRITCHARD PATENT PRODUCT CO. LIMITED, SEATON, DEVON, ENGLAND.