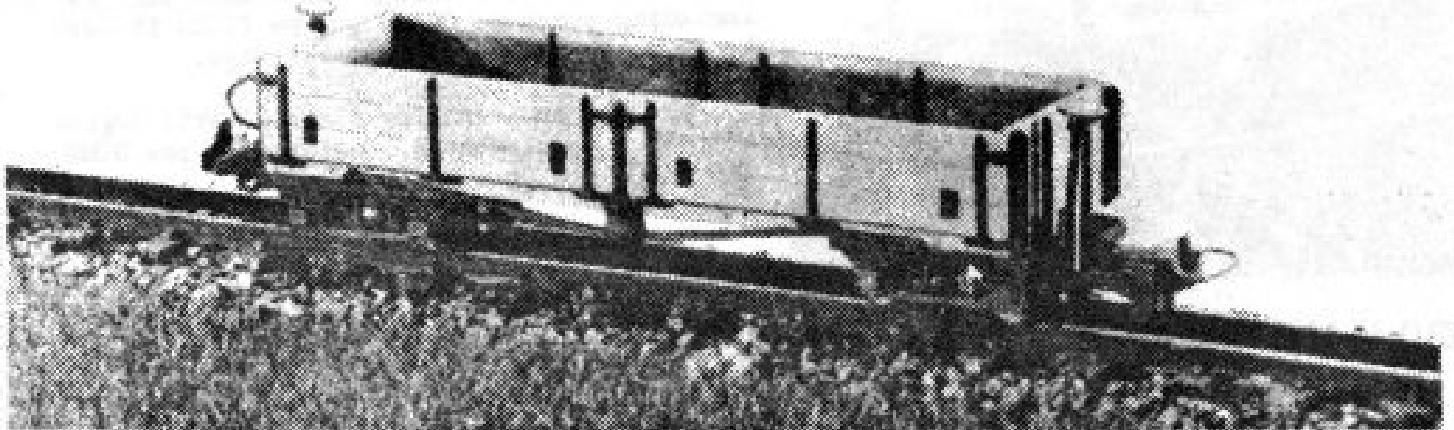


PARKSIDE DUNDAS

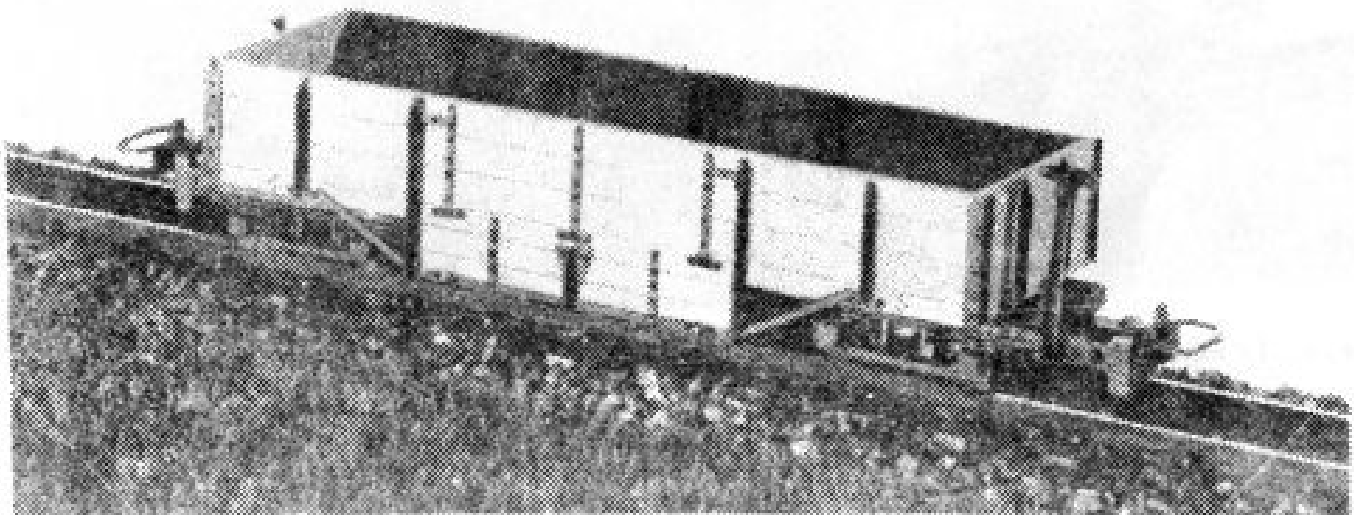
W.W.1 War Department 60cm Gauge Rolling Stock

During 1916 the development of the 60cm gauge railway system by the War Dept. called for a series of 10 ton high capacity bogie vehicles to be built. Many thousands of these vehicles were produced.

After the war both public and industrial railways purchased these wagons from the war surplus sales. Due to their sound design and construction they can still be found on narrow gauge railways today.



DM18 W.W.1 War Dept. Class D Dropside Bogie Open Wagon



DM19 W.W.1 War Dept. Class E Dropdoor Well Bogie Wagon

Both the above kits contain plastic bodies, one-piece plastic bogies and
The bogies are designed to use BEMO 009 couplings (not included).

metal wheel