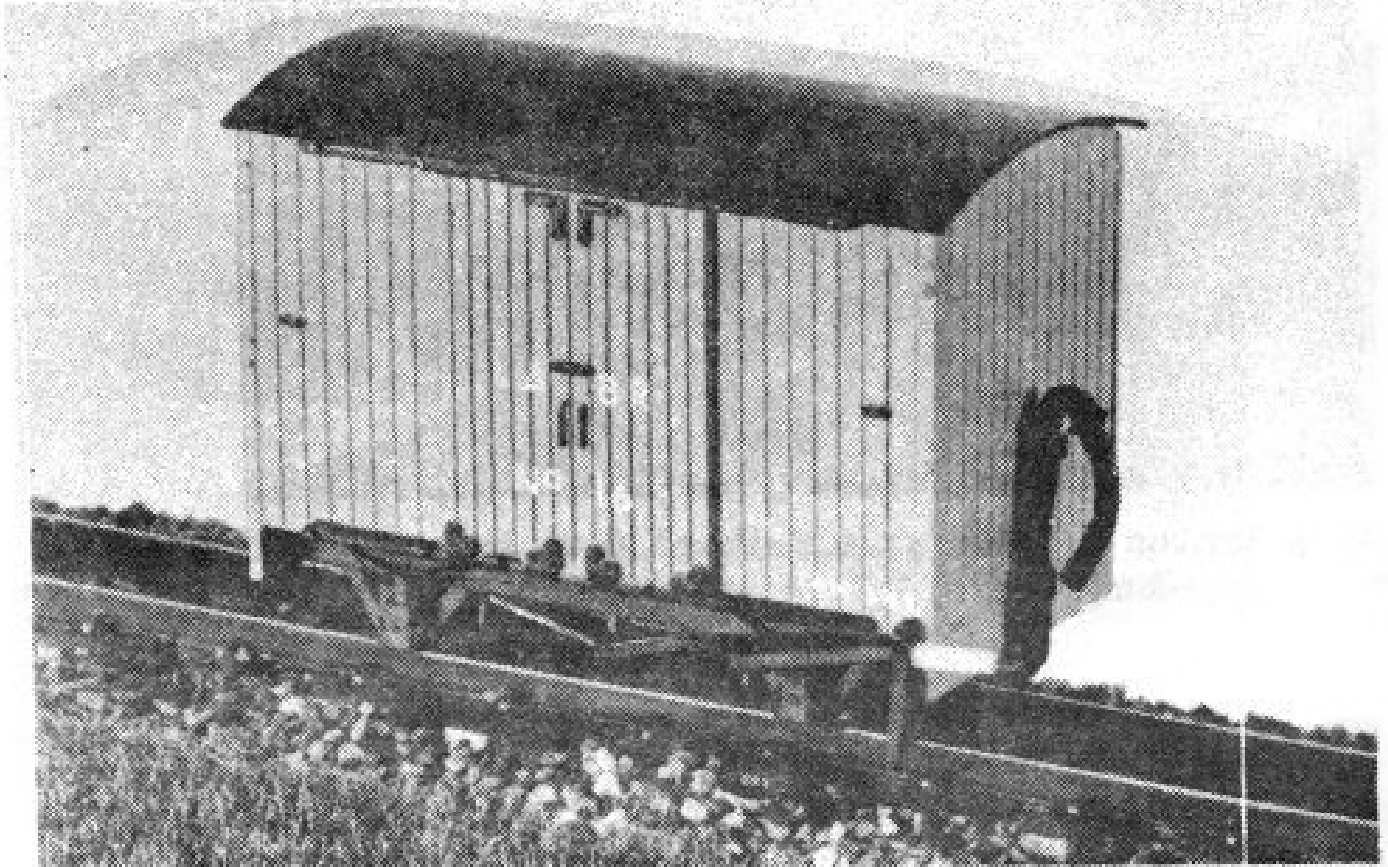


PARKSIDE DUNDAS

Lynton and Barnstaple Railway

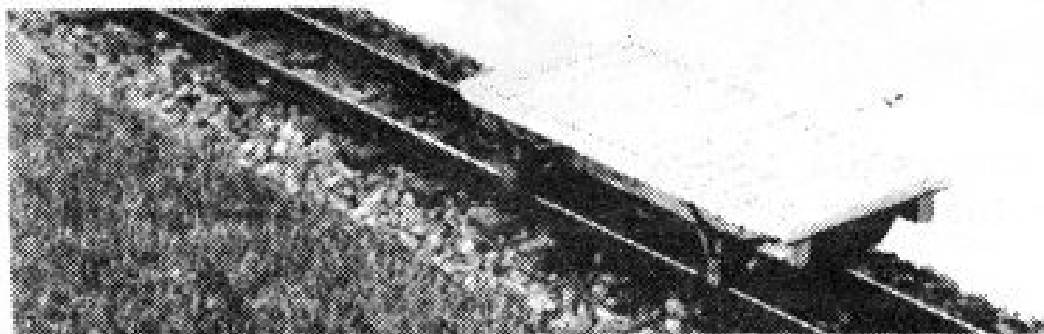
Unlike the narrow gauge railways of North Wales the Lynton & Barnstaple Railway did not serve one particular industry and was dependent on the general traffic of the district with coal being predominant.

Included in the original goods stock purchased were eight 4-wheeled open wagons and six 4-wheeled goods vans, all being of 4 tons capacity. The goods vans were based on the same underframe as the open wagons, had bodies of vertical match-boarding on internal framing and were fitted with a pair of sliding doors each side. They remained unmodified throughout their existence. These vehicles were vacuum-fitted and had a handbrake lever on one side.



DM16 Lynton & Barnstaple 4-Wheel Goods Van No's 3-4, 6-7, 15-16

The kit contains plastic body & chassis, metal wheels and white metal vacuum pipes & brake lever. Requires BEMO 009 couplings (not included).



DM23 Lynton & Barnstaple 4-Wheel Wagon/Van Chassis

The kit contains plastic chassis, metal wheels and white metal brake lever. Requires BEMO 009 couplings (not included).