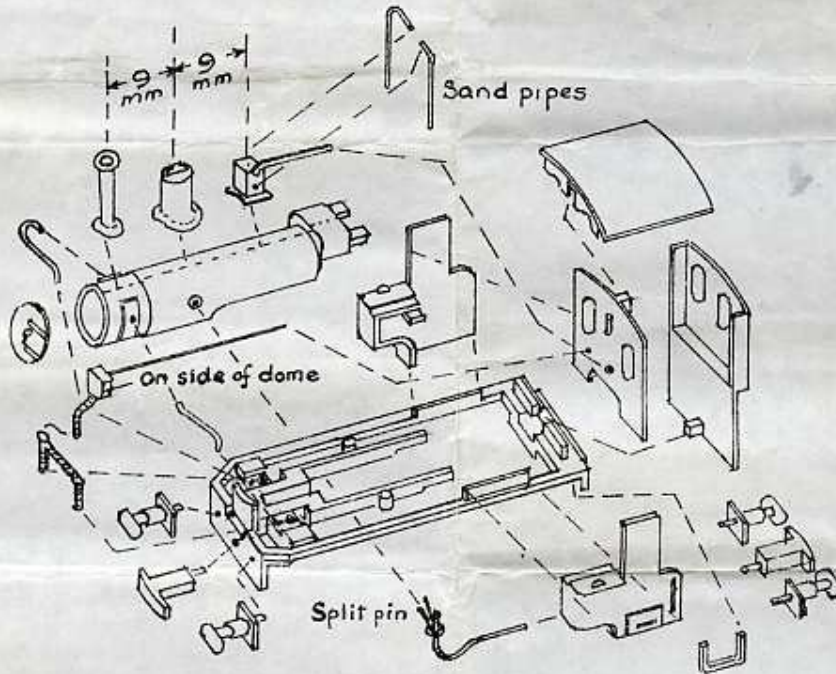




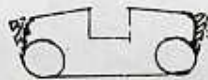
# TALYLLYN RAILWAY No. 6 "DOUGLAS"

9/mm gauge

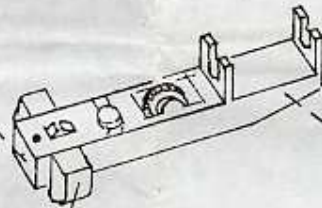
4/mm scale



Cut off  
Buffer beam  
& coupling hook



File cylinders



Cut off  
steps & buffers  
& coupling hook

## ALTERATIONS TO CHASSIS

### INSTRUCTIONS FOR ASSEMBLY

Carefully clean off any flash or rough edges from the various castings using a sharp knife or file. The various parts should be glued together. Uhu, Araldite or similar cement is suitable. Avoid thick joints which will prevent the various parts fitting together correctly. Before gluing it is advisable to try a "dry" assembly to ensure that the parts are fitting correctly and that no flash or roughness has been overlooked.

Should you prefer to assemble this kit by the use of solder it is essential that a low melting point solder be used. We recommend our GEM METAL-KIT SOLDER. A packet contains sufficient for at least one complete kit. A small soldering iron is necessary.

Prepare the Arnold chassis as shown on drawing.

Offer chassis to footplate allowing the rear lug to drop into recess in footplate. Push up chassis at front so that plastic clip engages in footplate. It may be necessary to file footplate slightly to allow clip to engage correctly. **THIS MUST BE DONE AT REAR END ONLY.**

The rear end of chassis will float until motor is fitted and body in position.

Chassis may now be removed and assembly of body commenced. Check that there is sufficient side clearance for motor to slide through footplate opening.

Assemble boiler halves (fit split pins before fixing halves).

Fit cab sides to footplate and "U" steam pipes. Fix boiler.

Refix chassis to part assembly. The lugs projecting at rear of firebox should just rest on top of motor without undue pressure. Too hard a pressure will cause bending of footplate at rear end. If necessary file lugs to obtain exact fit.

Add parts such as cab back and roof and smaller details. Make sure that the pipes formed from wire entering valve chest do not project below as they will prevent proper seating of chassis.

It is advisable to remove loose valve gear parts whilst working on chassis to prevent their damage or loss.

Should any part be damaged during assembly, please return the part to us for replacement, enclosing 5p. in the case of smaller parts or 10p. in the case of larger castings.

Manufactured by:—

**GEORGE E. MELLOR**

31a, Rhos Road, Rhos-on-Sea, North Wales