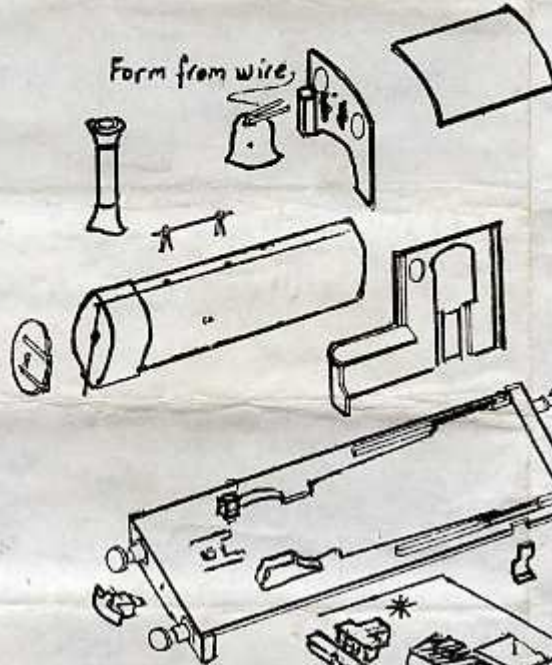
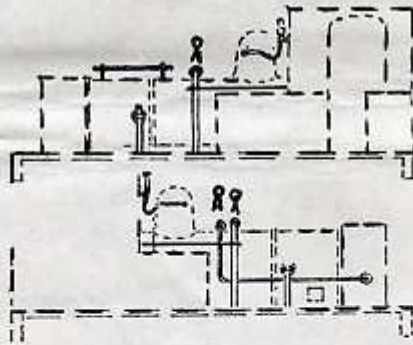


TALYLLYN RAILWAY

"DOLGOCH"

9 m/m gauge

4 m/m scale



Use wire for piping & split pins where shown

MODIFY ARNOLD CHASSIS AS SHOWN

File top of cylinders (shaded) to allow chassis to drop into footplate which must be parallel to track level.

Take off keeper plate and remove centre pair of driving wheels and front & rear couplers. Place cast* chassis fixing plate in front coupler recess cutting away surplus plastic at end to allow plate to drop into position. Chassis is fixed to footplate by 10.B.A screw.

Remove pegs and buffers marked "A". Cut away shaded parts under motor so that unit fits into opening in footplate. Remove small projections above front driving wheels.

Recess "B" at rear end of chassis fits over footplate inside cab. Remove outside valve gear leaving only connecting rod from rear driving wheels to cylinders.

Carefully clean off any flash or rough edges from the various castings using a sharp knife or file. The various parts should be glued together. Uhu, Araldite or similar cement is suitable. Avoid thick joints which will prevent the various parts fitting together correctly. Before gluing it is advisable to try a "dry" assembly to ensure that the parts are fitting correctly and that no flash or roughness has been overlooked.

Should any part be damaged during assembly, please return the part to us for replacement, enclosing 20p

Should you prefer to assemble this kit by the use of solder it is essential that a low melting point solder be used. We recommend our GEM METAL-KIT SOLDER. A packet contains sufficient for at least one complete kit. A small soldering iron is necessary.

Manufactured by:—

GEORGE E. MELLOR

31a Rhos Road, Rhos-on-Sea, Colwyn Bay
Clwyd. LL28 4RR