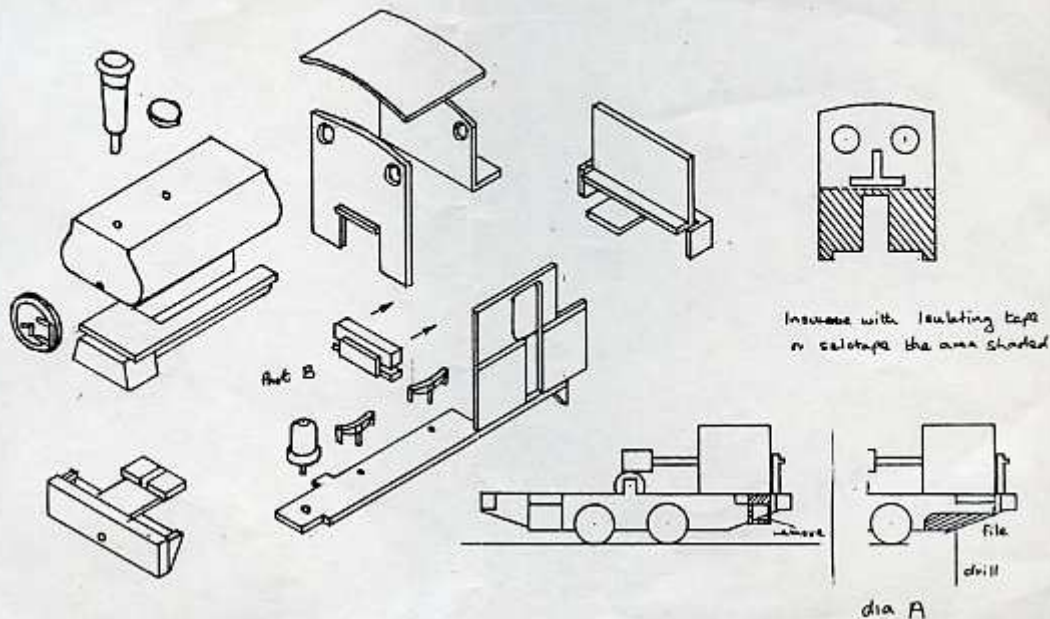


CAMPBELTOWN & MACHRIHANISH CHEVALIER Assembly instructions



This kit is based on the Campbelltown and Machrihanish CHEVALIER in her later condition. This loco was built as an O-4-OT with an open cab but was later rebuilt as an O-4-2T with an enclosed cab and a rear coal bunker. Full details of her various conditions can be found in the book about the C&M by Nigel Macmillan.

The kit is designed to fit on the Arnold O-4-OT chassis which requires a little modification. Firstly remove the buffers couplings and the small footsteps shaded on the diagram. File the rear of the chassis flat to the profile as shown in dia A. Drill hole suitable for an 8BA screw (no43clearing no50tapping) so that its centre is in line with the wings that form the motor supports. The trailing pony truck can then be attached with an 8BA screw. The wheels are kept in place with the small piece of channel included in the kit.

Body assembly. Do have a dry run before you make the kit. Assembly starts by fitting the two sides/footplates with the front and rear buffer beams between them. It will be found that the front buffer beam clips into place. To do the same at the rear part B slides into place latter side upwards. It is important to check the chassis at this stage because the two little knobs at the rear of the chassis fit at the top of this part and you have the opportunity to adjust the length of the opening at this stage. You can then fit the front and rear of the cab, and the springs.

Fit the saddletank to the lower boiler half and attach the complete unit to the footplate. You can then fit the remaining small parts including the buffers to the front and rear bufferbeam. For those of you who do not know the loco the sand dome sits on the front footplate.